

# PORTFOLIO

2021

KRISTELL TANBEH

INTERIOR ARCHITECT

# KRISTELL TANBEH

Interior Architect

I am a creative, reliable and competent designer who easily adapts to a team or individual work environment. Always eager and in search of knowledge and open to challenges that will help increase my expertise in my career.

**Nationality :** French-Lebanese  
**Telephone :** +961 3 509 617  
**Mail :** kristelltanbeh@gmail.com  
**Date of birth :** 20 march 1996

## SKILLS

**Languages :** French Native  
English Fluent  
Arabic Fluent

**Softwares :** Autocad | Indesign |  
Photoshop | Illustrator |  
Sketchup | 3dMax | Vray  
| Excel | Powerpoint



## EDUCATION

- 2017-2019 ROYAL COLLEGE OF ART, London, England  
Master's degree in interior design.
- 2014-2017 ACADÉMIE LIBANAISE DES BEAUX-ARTS [ALBA], Beirut, Lebanon  
Bachelor's degree in interior architecture.
- 2000-2014 GRAND LYCÉE FRANCO-LIBANAIS, Beirut, Lebanon  
French baccalaureate, specialized in economy and sociology with emphasis on mathematics.



## EXPERIENCES

- 2019-present PK ARCHITECTS, INTERIOR ARCHITECT, Beirut, Lebanon
  - Management of several private residential projects in France, from design to development to execution, varying between 500 and 1000 square meter.
  - Supply of schematic plans, concept, 3D, presentation, technical file and FF&E selection.
  - Visit and evaluation of construction sites in Beirut as well as in Iraq.
  - Design and presentation of several office projects in the Middle East.
  - Development and management of a workshop at a telecommunication company in Iraq.
- 2018 DORI HITTI ARCHITECTS, INTERN, Beirut, Lebanon
  - Research and development of a residential project's design and supply of schematic and technical plans.
- 2017 DESIGNER JOE FARAH, INTERN, Beirut, Lebanon
  - Development of a schematic and conceptual plan of a student studio.
- 2018-present TARTINE ET CHOCOLAT, EXHIBITION SCENOGRAPHY, Beirut, Lebanon
  - Development, design and execution of luxury children's clothing store windows.
  - Creation of a model and layout of a space based on themes chosen by customers for baptisms and births.



## ACCOMPLISHMENTS

- 2019 SPACE IDENTITY, ASIACELL, Sulaymaniyah, Iraq
  - Development and follow-up of a workshop given to employees of the telecommunications company Asiacell, to understand their needs and desires regarding their workspaces.
- 2018 INVISIBLE DESIGN, IKEA/BYREDO, Älmhult, Sweden
  - Participation in a workshop aiming at the creation of an invisible product emitting fragrances in a residential space, under the theme of "the democratization of perfume".
- 2016 VOLUNTEERING, LONG WAY HOME, Comalapa, Guatemala
  - Integration of the "Green building academy" site team by contributing to their efforts to design the only school in the region of San Juan Comalapa, in an ecological way using local resources in order to serve the underprivileged community and to make education accessible to all.
- 2016 EXHIBITION SCENOGRAPHY, SURSOCK MUSEUM, Beirut, Lebanon
  - Participation in the exhibition entitled "Travel Scenes" organized by ALBA. As part of a scenography research and experimentation workshop around the theme of travel. The exhibition included spatial transcriptions of the artwork in models, lighting designs as well as costume and mask creation.

## CONTENT

- 1 - Private Villa
- 2 - Commercial Space
- 3 - Syrian Refugees Dwellings
- 4 - Photography Gallery
- 5 - Industrial Bar
- 6 - Beauty Center

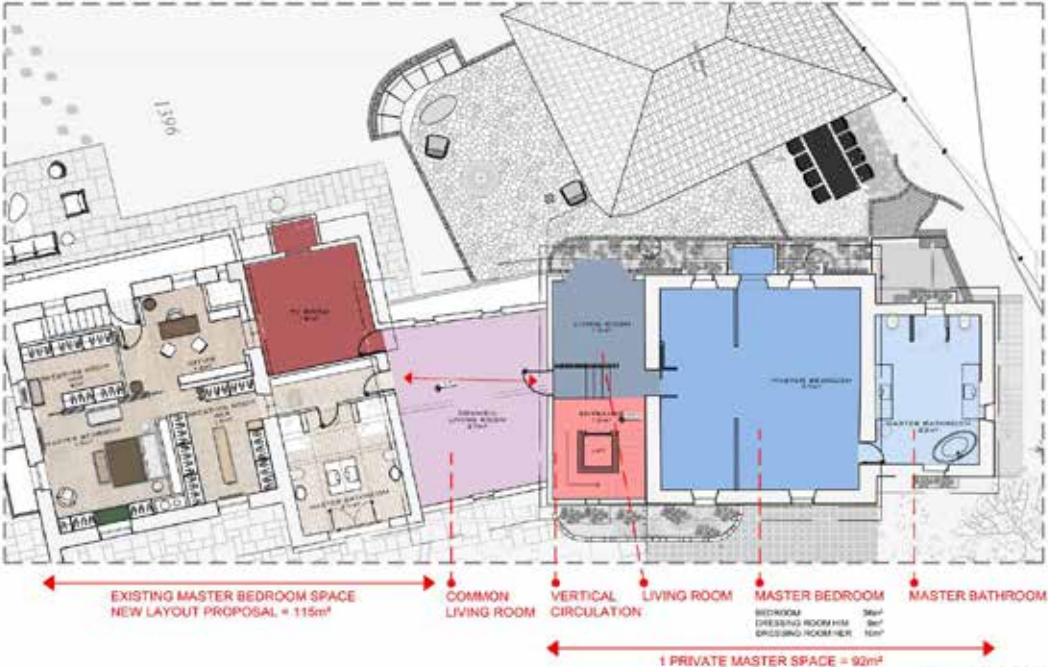
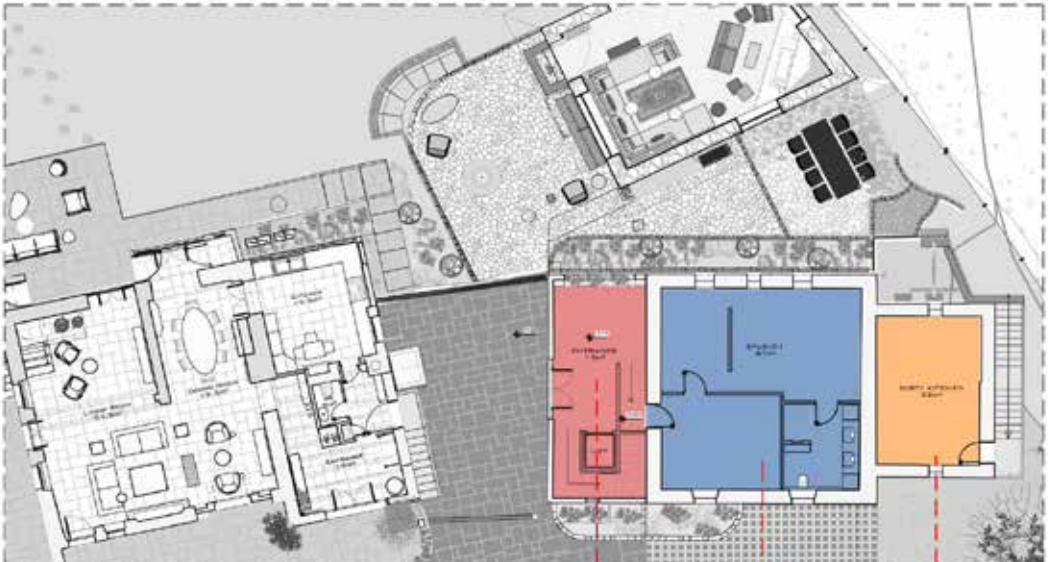
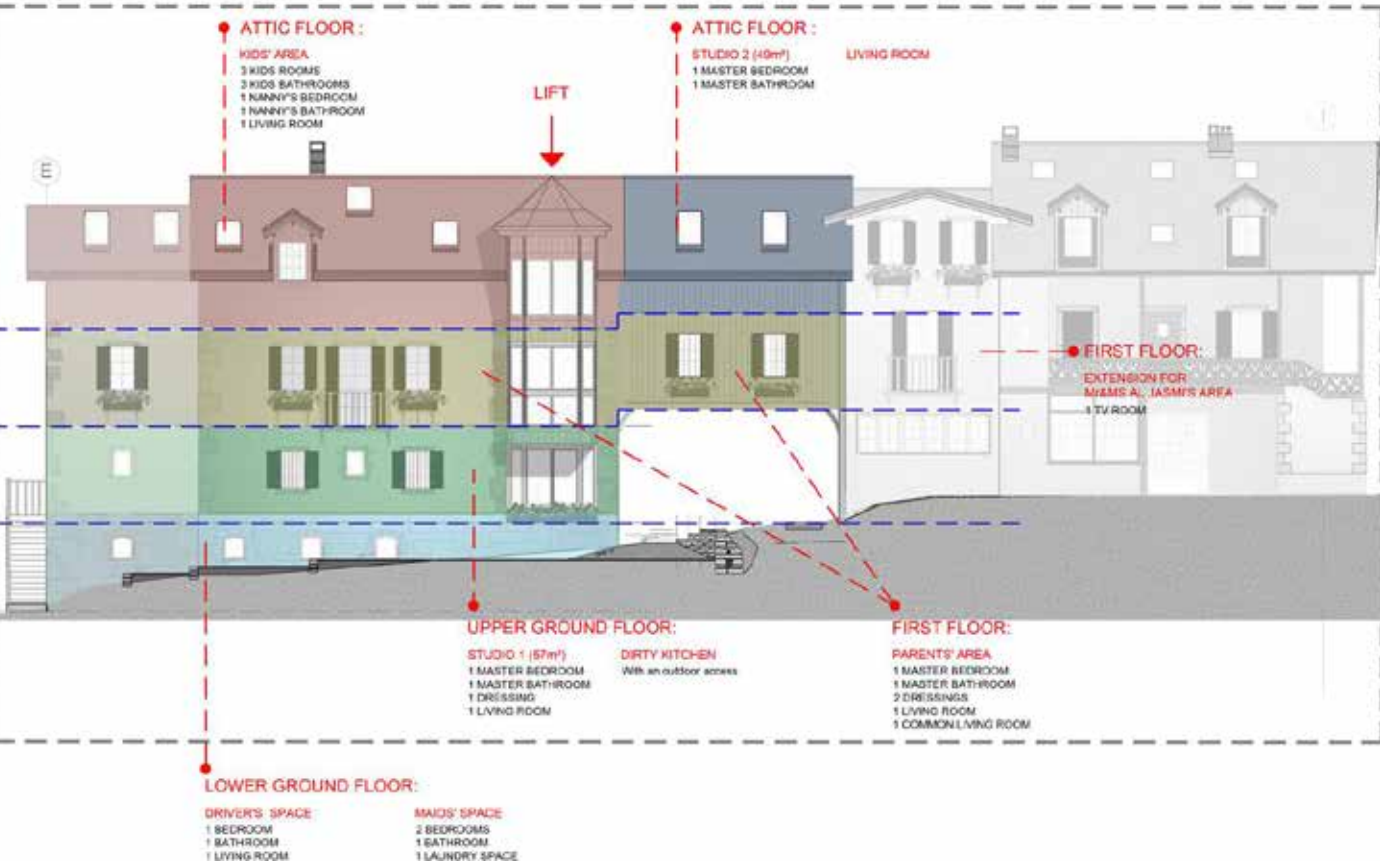
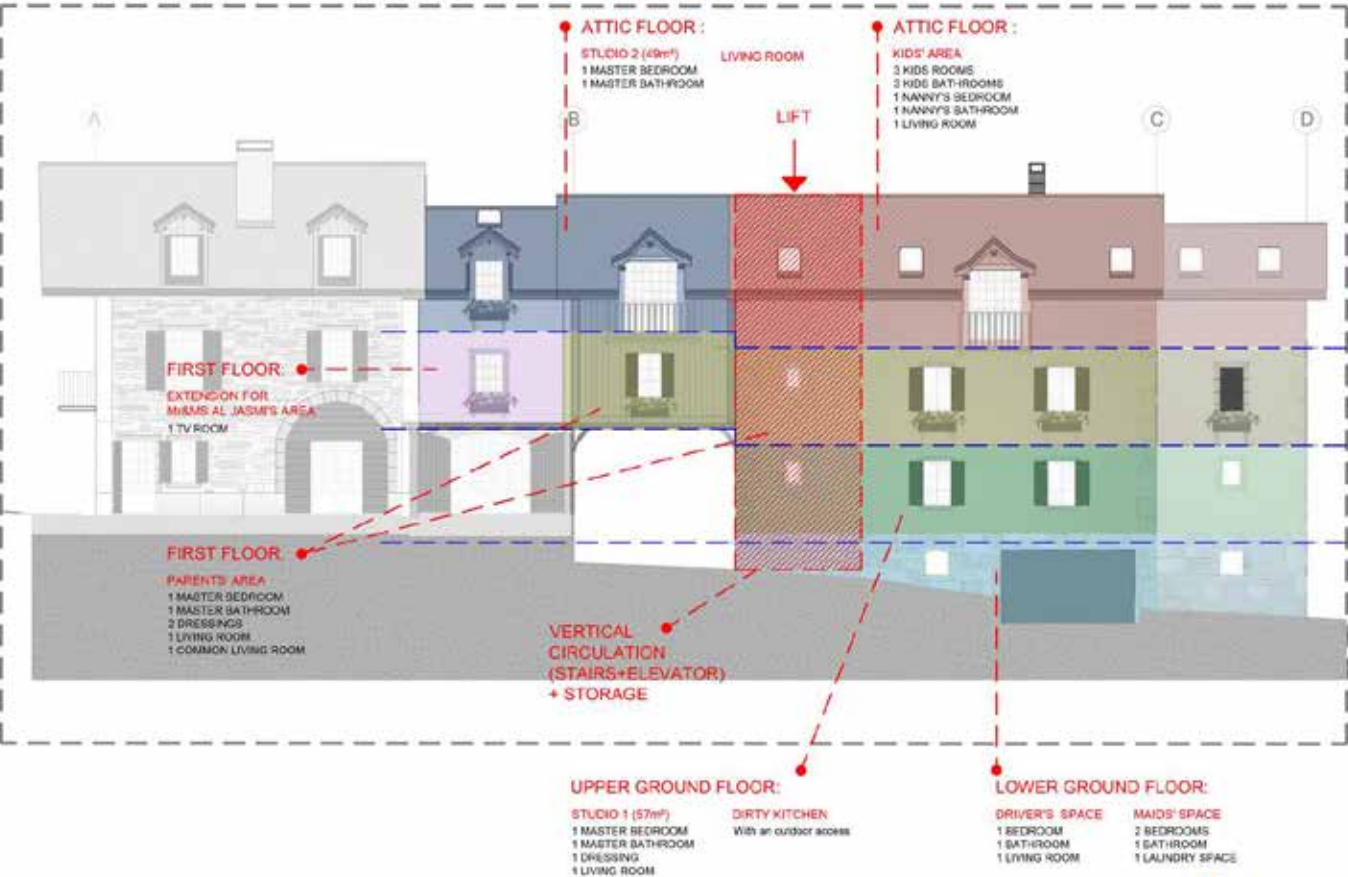
## 1

## PRIVATE VILLA

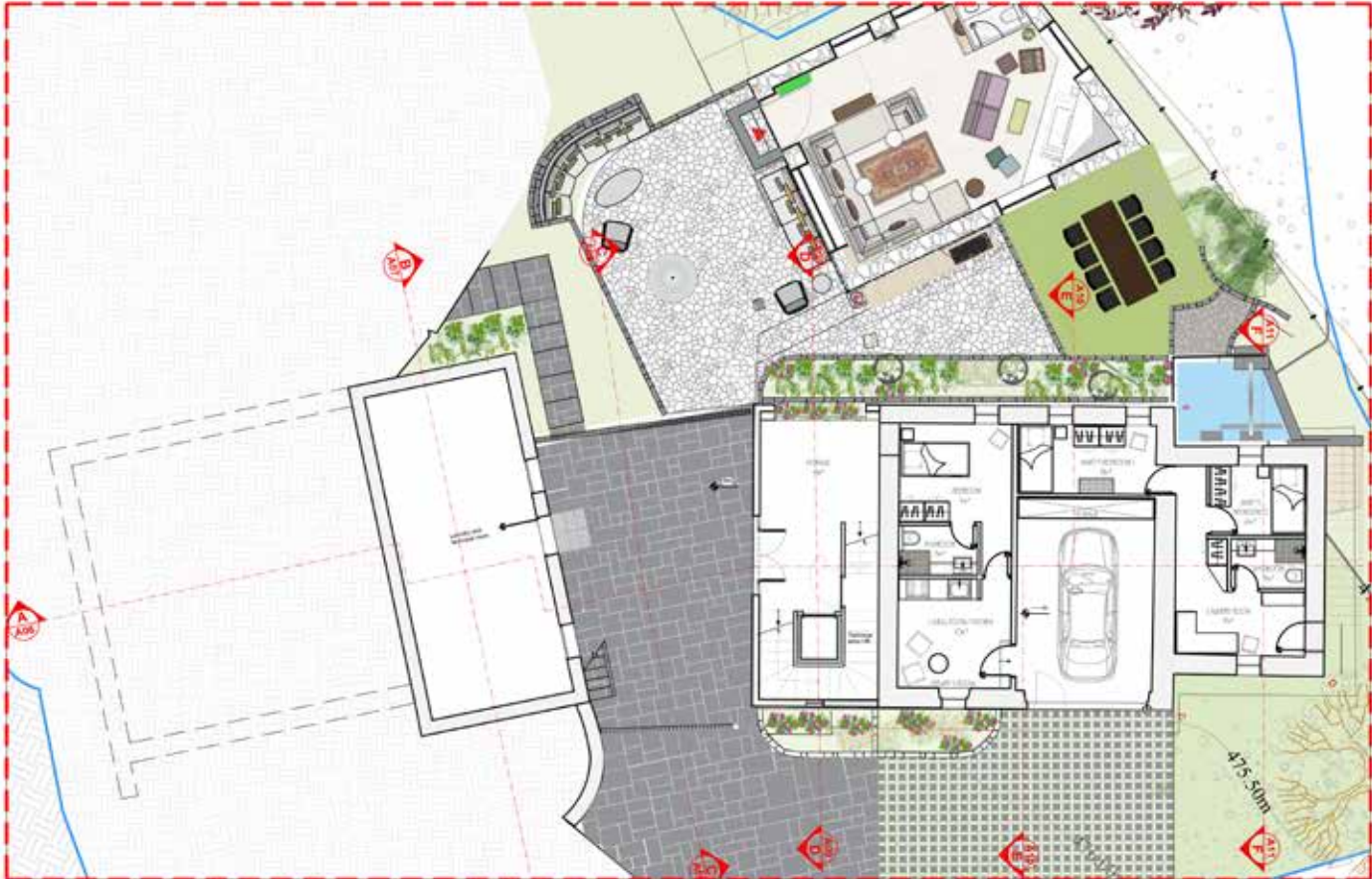
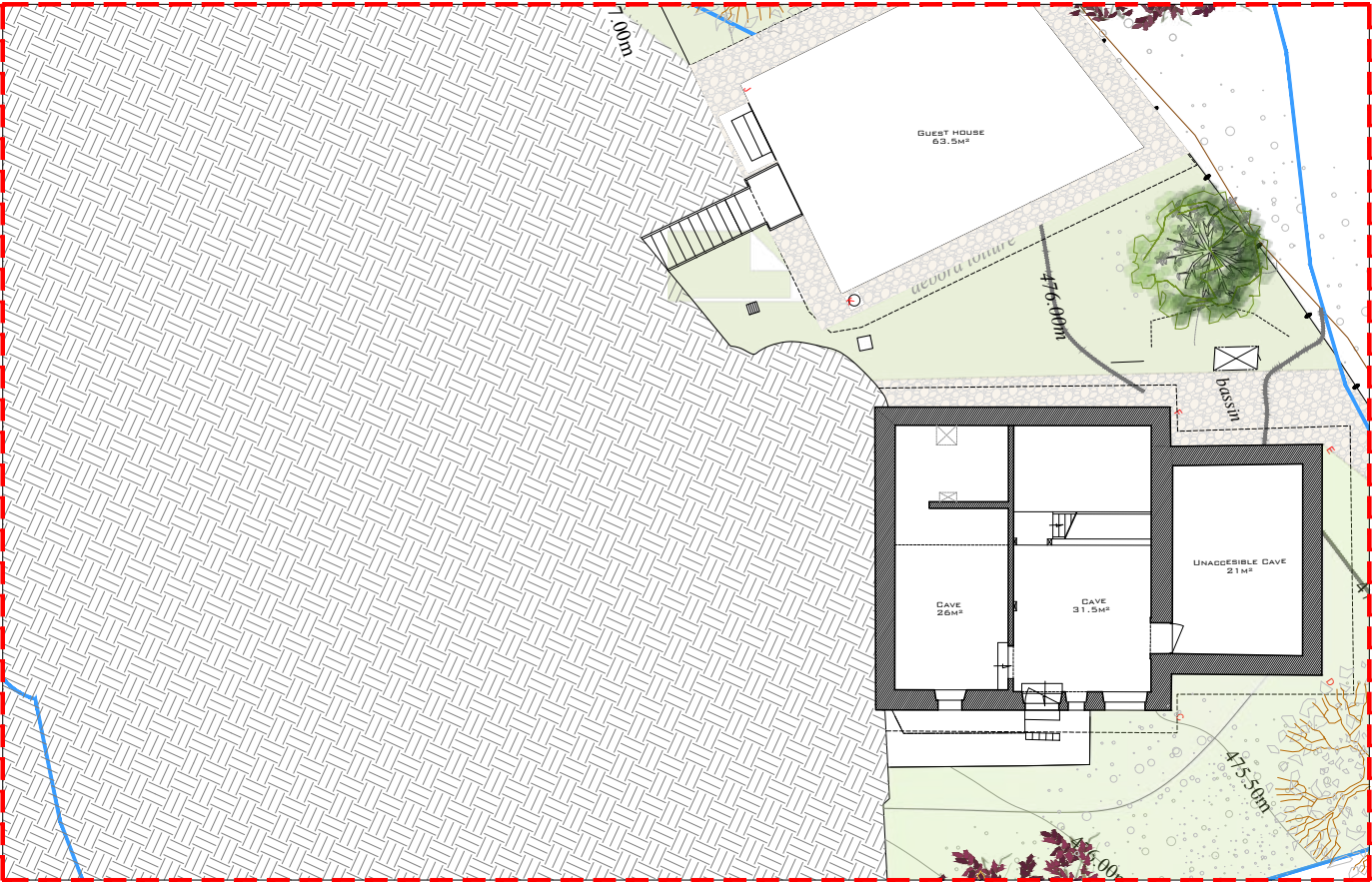
An on-going residential project at PK Architects, located at Divonne-Les-Bains in France situated on the border of Switzerland. The clients bought a summer house to be able to reunite their kids and grandkids during the holidays. They wanted to create a family home where everyone can find his place and feel at home. We decided to connect the two houses which created common spaces that reunite the family, and added an attic floor dedicated to the kids' families.



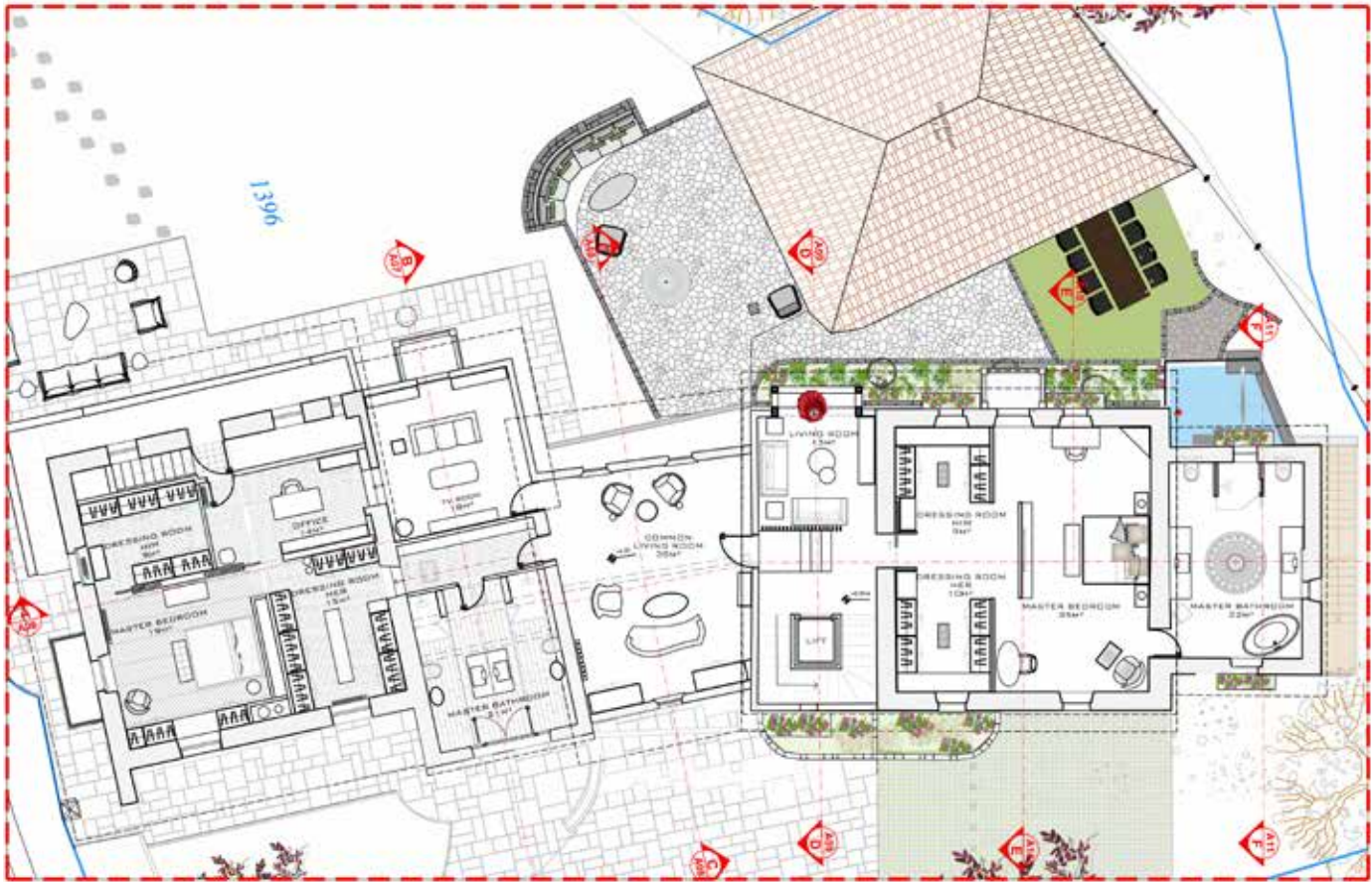
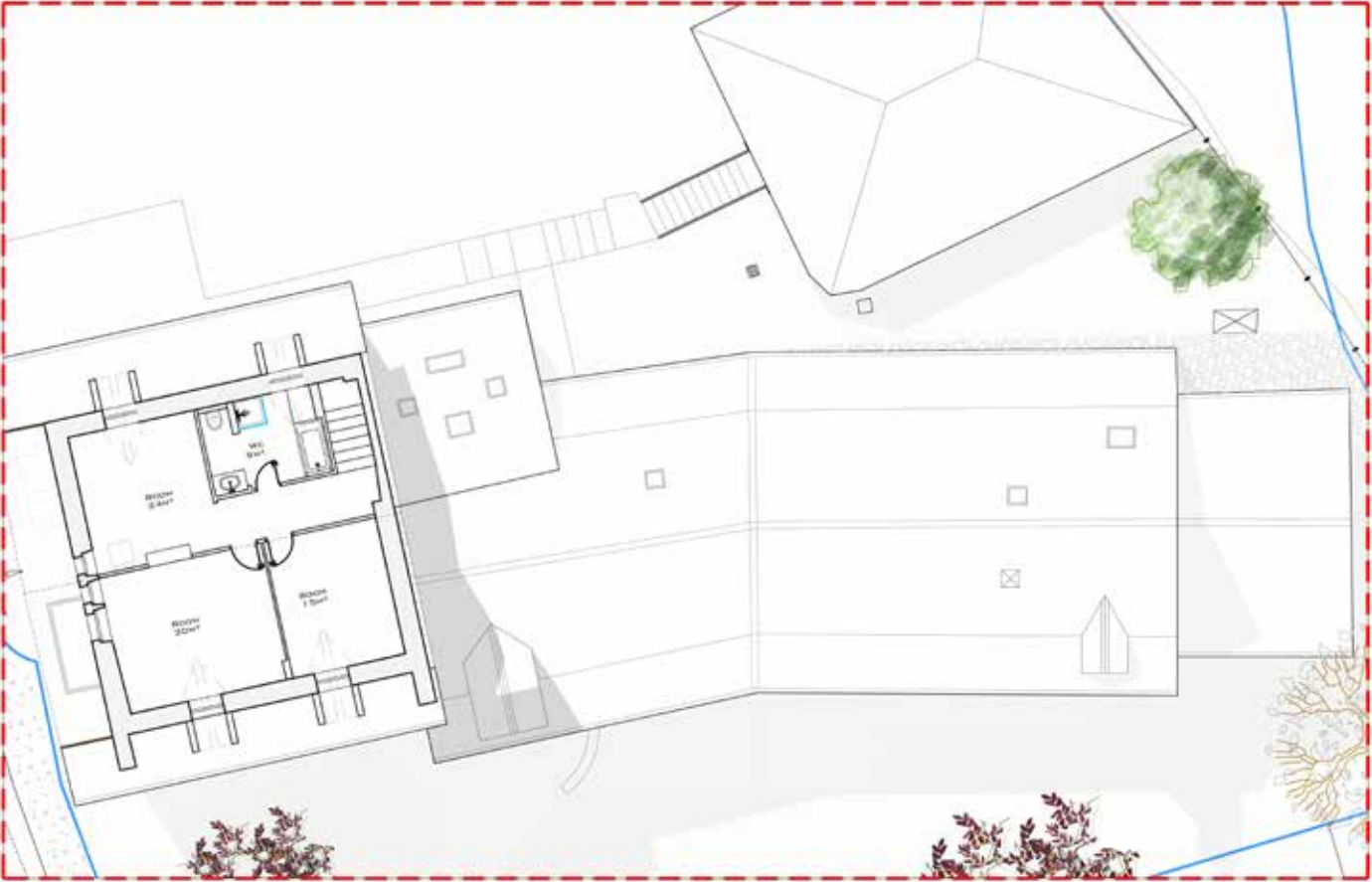














## 2 COMMERCIAL SPACE

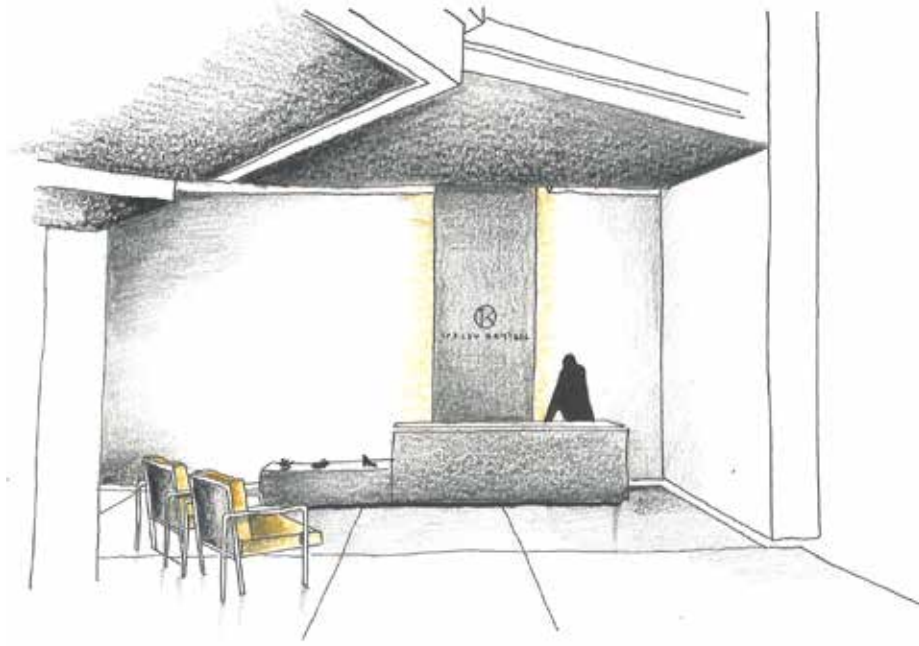
The commercial space is transformed into a shoe store. The shoes chosen are composed of several layers and sharp edged corners. These characteristics are employed in an architectural perspective generating a dynamic space.

The second floor consists of two levels where two superimposed slabs follow the aspect of the shoe designs.

Finally, the dark colors are used to stress the imposing characteristics of these shoes.

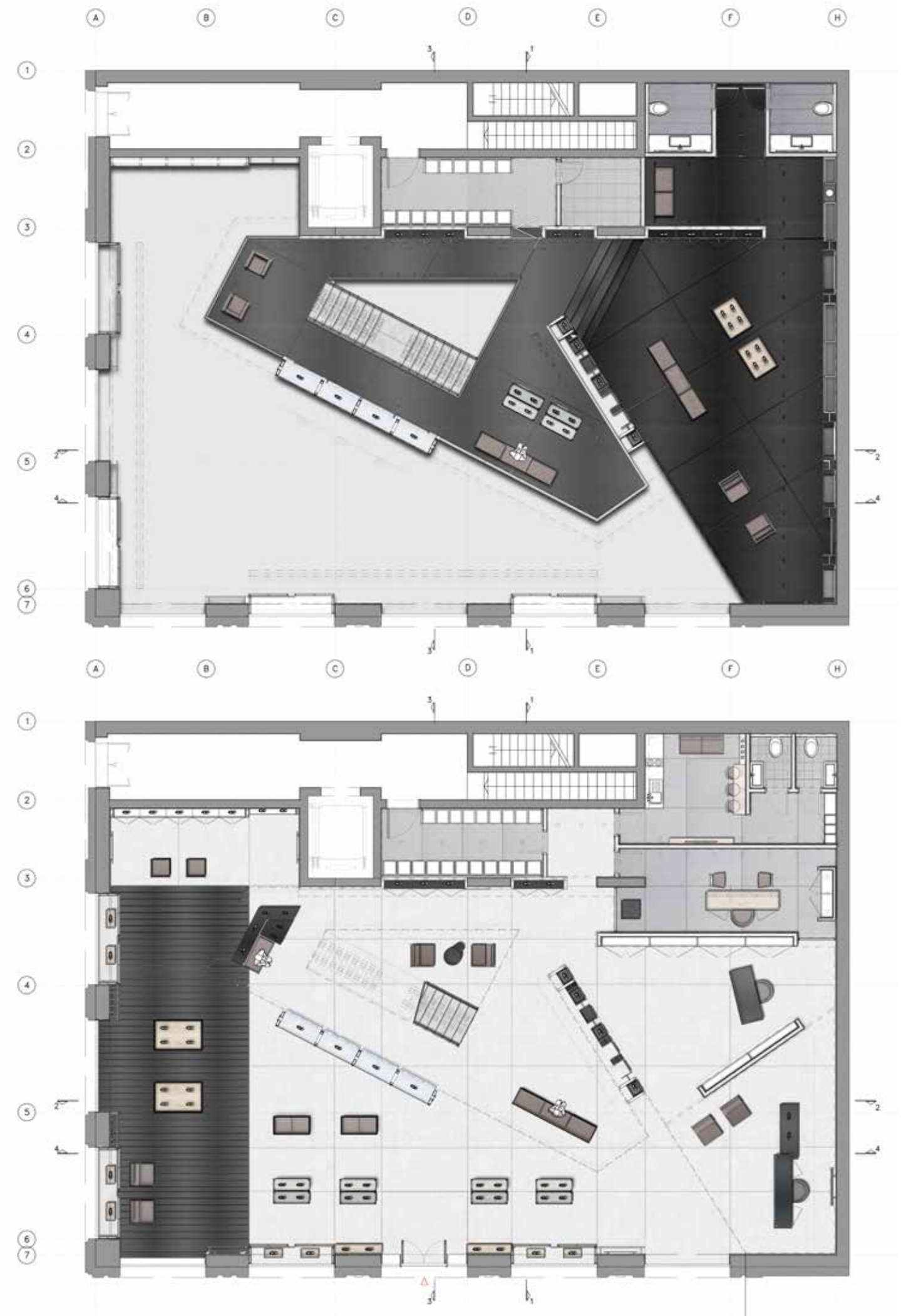






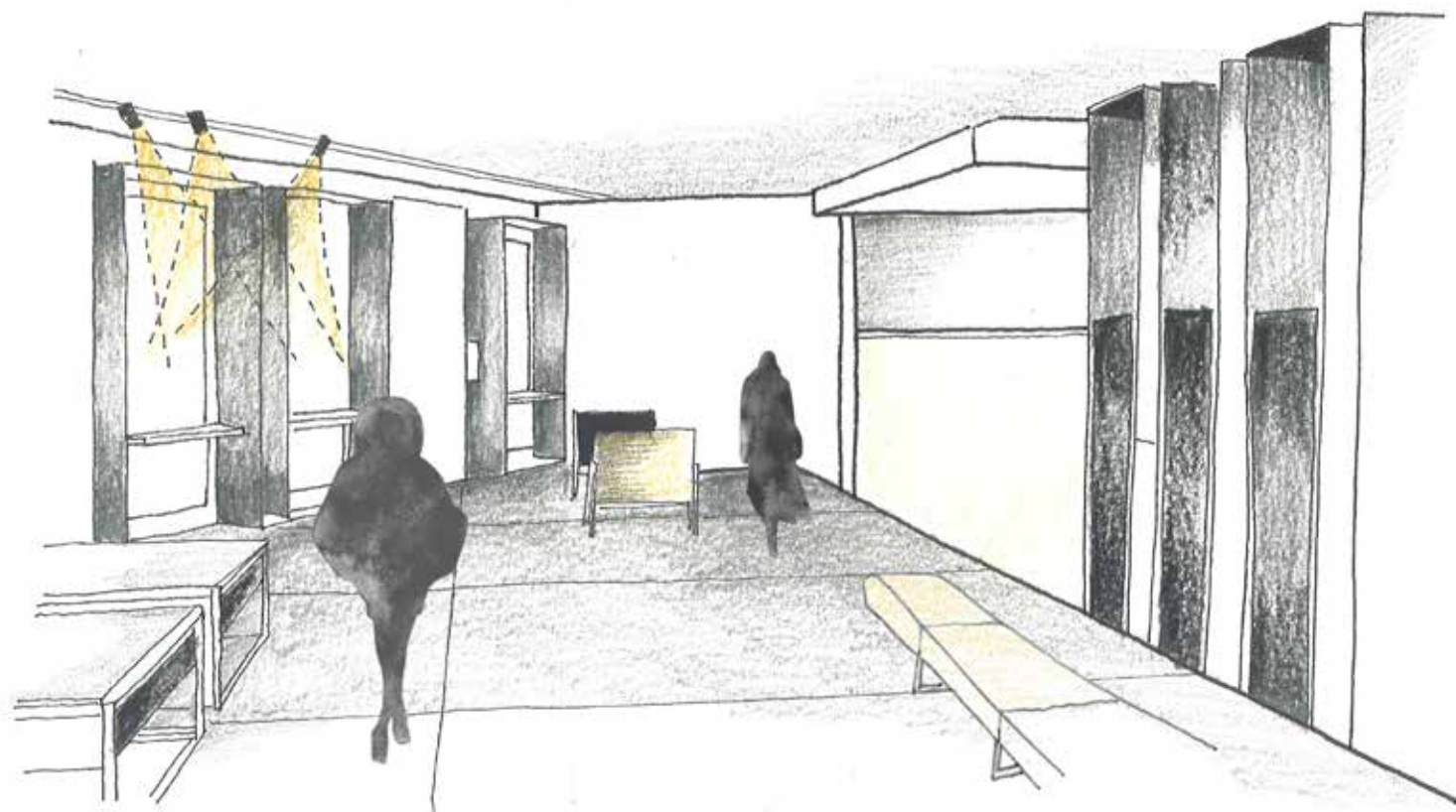
Dynamic spaces reflecting the product design outlines  
Several layers stacked with sharpened edges dividing the store and offering unique spaces to highlight the mood of the products.













### 3

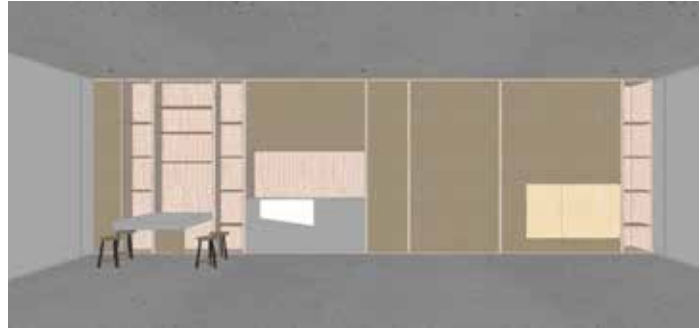
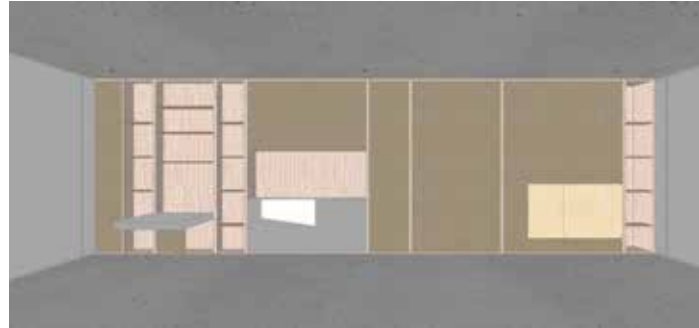
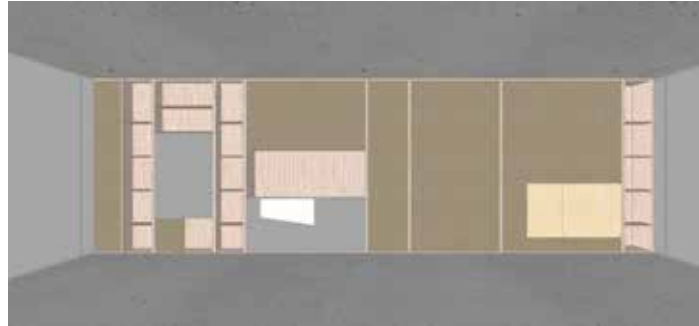
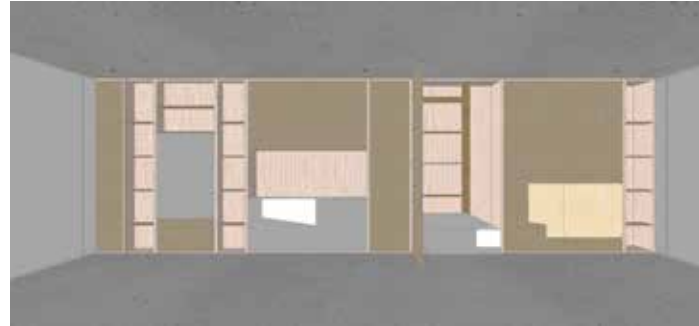
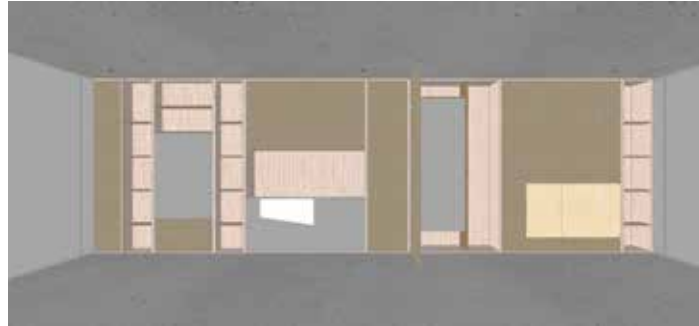
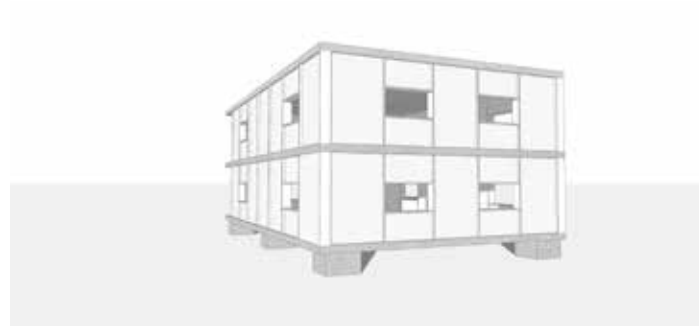
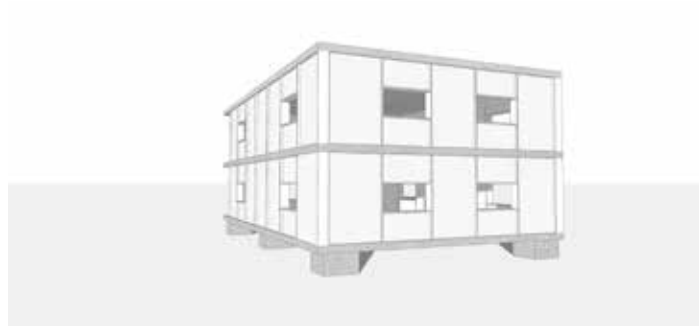
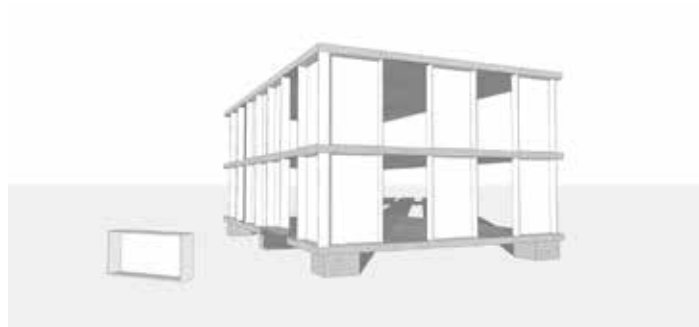
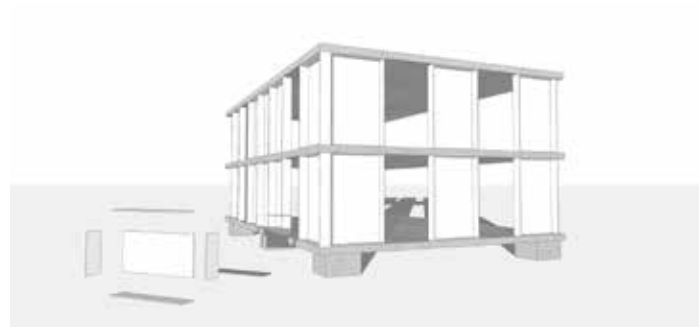
## SYRIAN REFUGEES DEWELLINGS

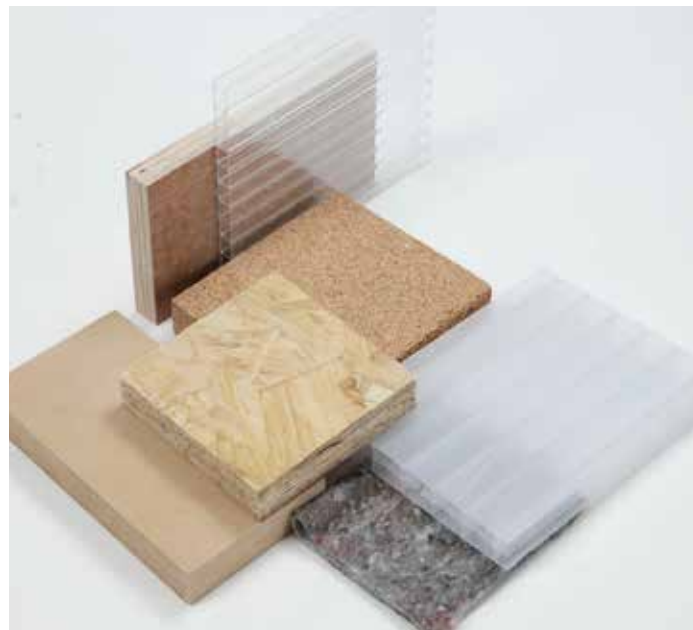
Taking Le Corbusier's intention for the Maison Dom-ino as it's cue, this project develops a prototype for economical compact dwellings to house Syrian refugees in Lebanon. I devided the Maison Dom-ino into four different dwellings that accomodate families in compact spaces, by creating a flexible modular system. I used simple materials that are economical and functional which allows volunteers and the refugees to build the dwellings together.











I created dwellings that accomodate families in compact spaces.  
I chose simple materials that are economical and functional to ease the construction which allows the volunteers and the refugees to build the dwellings together.



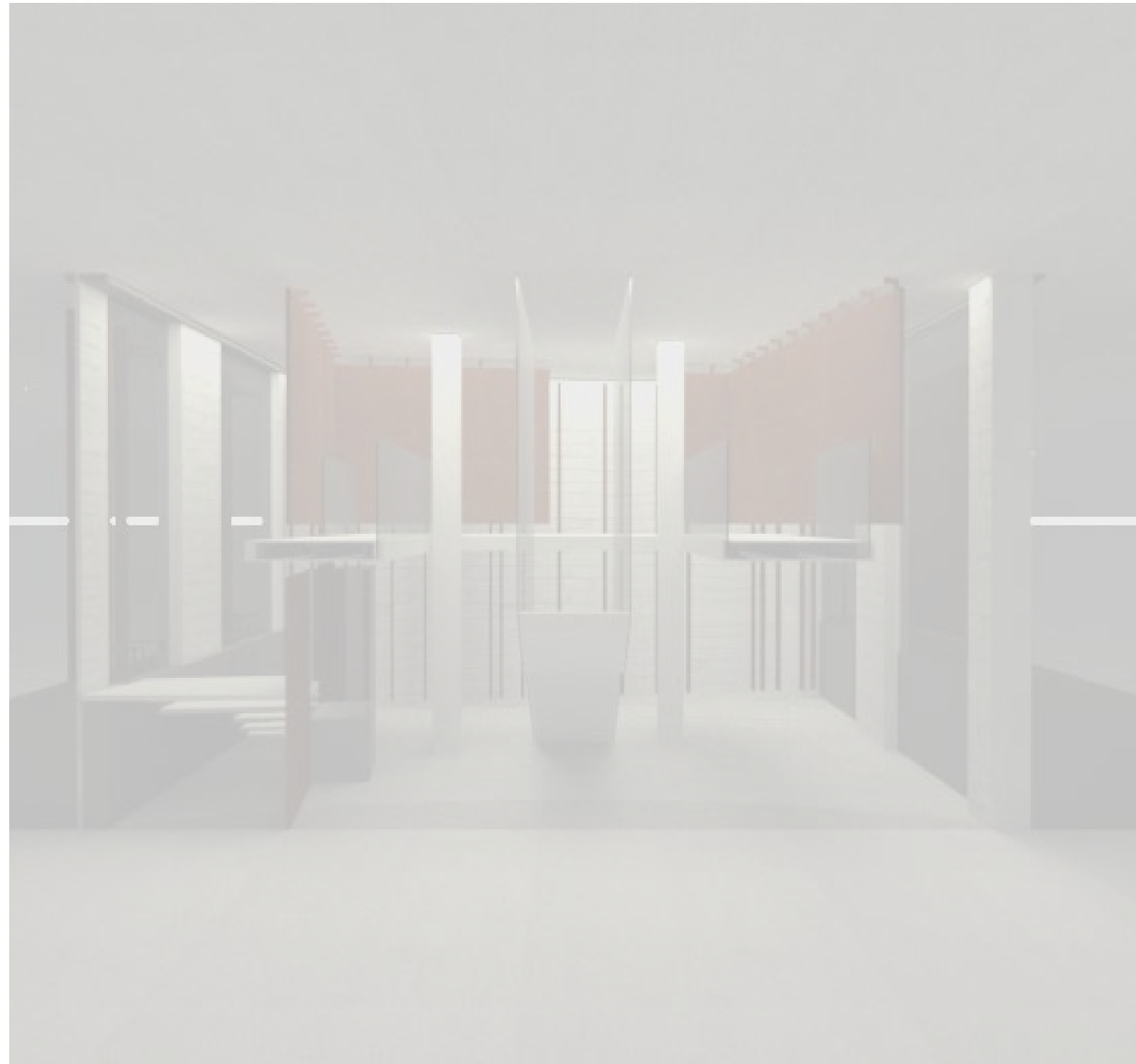




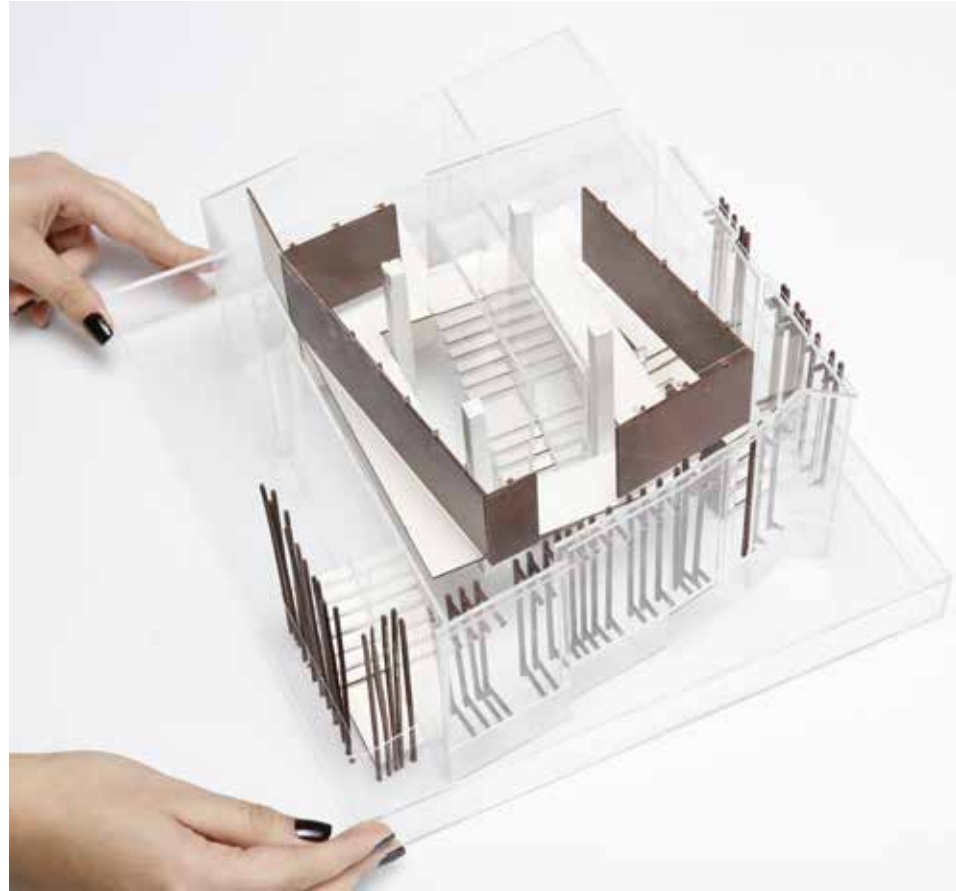
4

## PHOTOGRAPHY GALLERY

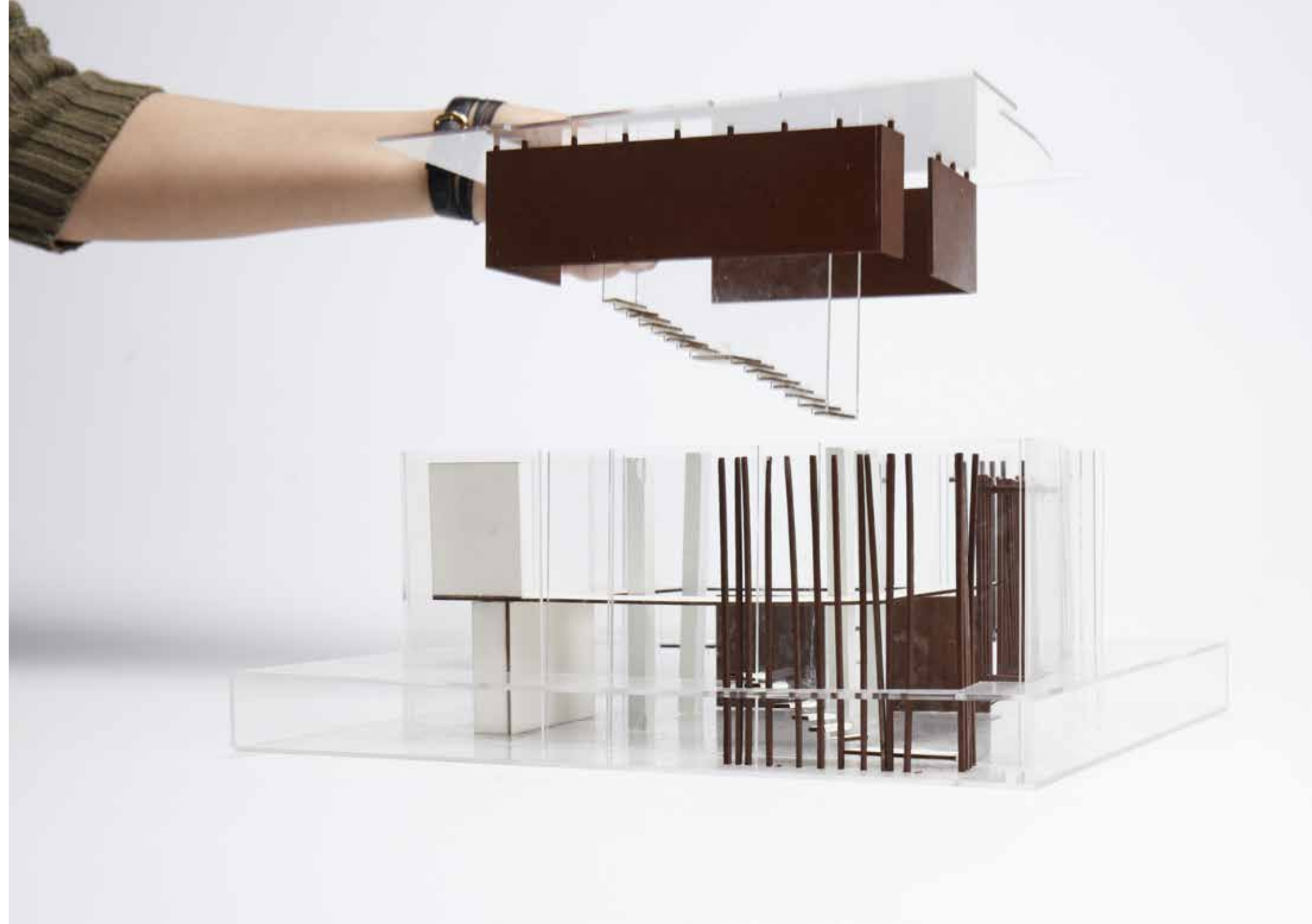
The site was located on Flitcroft Street, London, where many rock bands found success in the 60's while it was often seen as an expression of youth revolt with their loud guitars and rude attitudes, which I translated by creating a dark exploded box made of corten steel, in contrast of the neutral and light interior space.

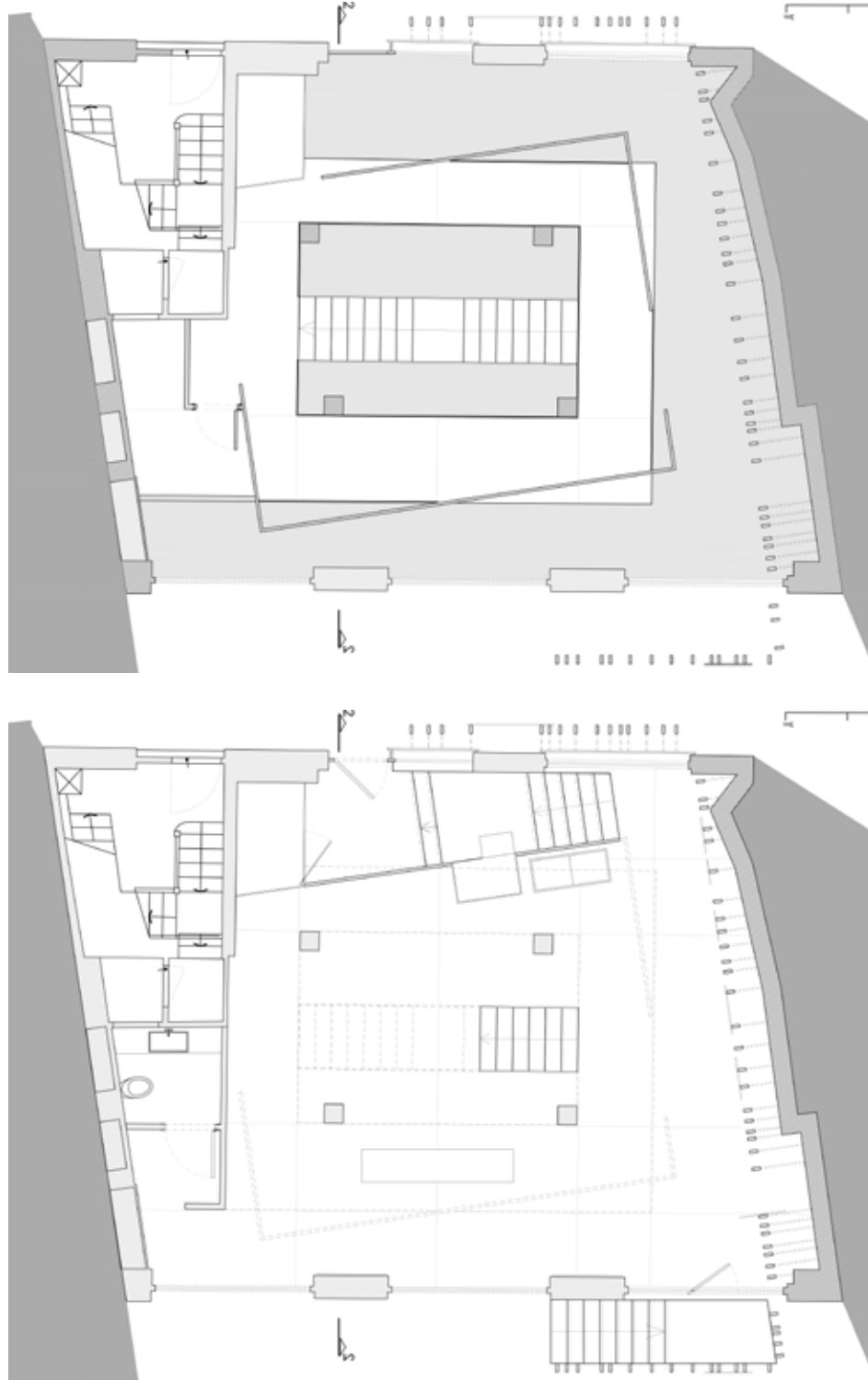






I created a structure made of corten steel that continues outside on both facades, and which develops into a spacious exhibition space on the ground floor, while the second one, at the level of the mezzanine, is smaller and darker with a more dramatic display, that you can access from the folded steel sheets that form the stairs which are surrounded by glass panels.







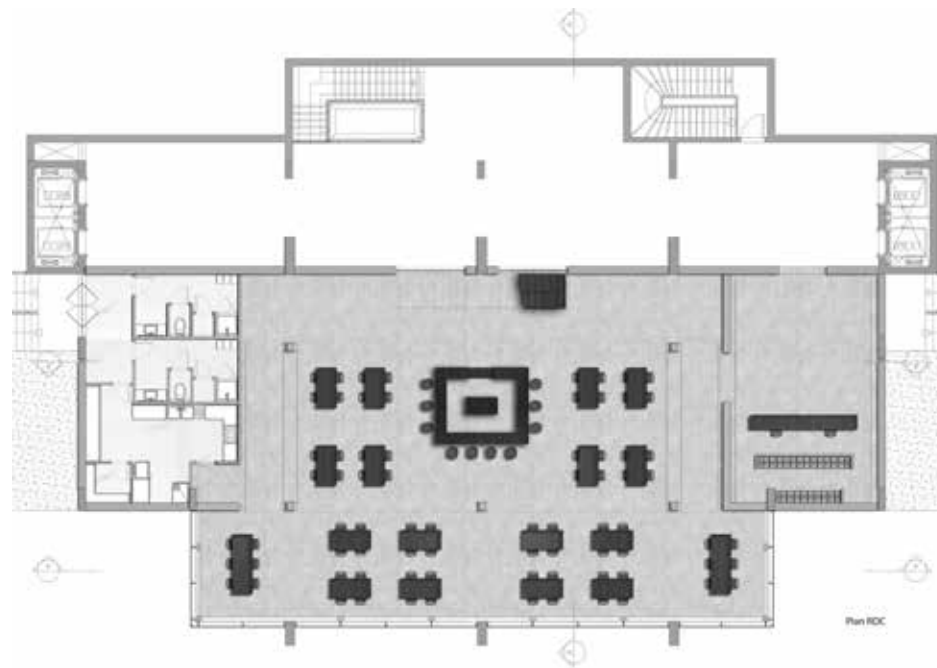
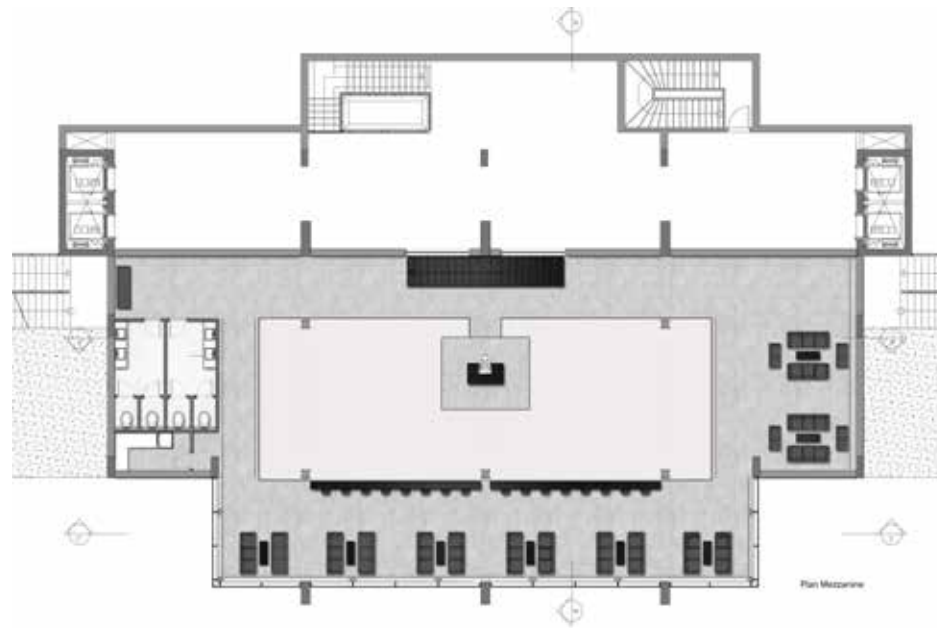
## 5 INDUSTRIAL BAR

Being an old factory, I chose to enhance the history of the space by remodeling it while keeping its industrial aspect.

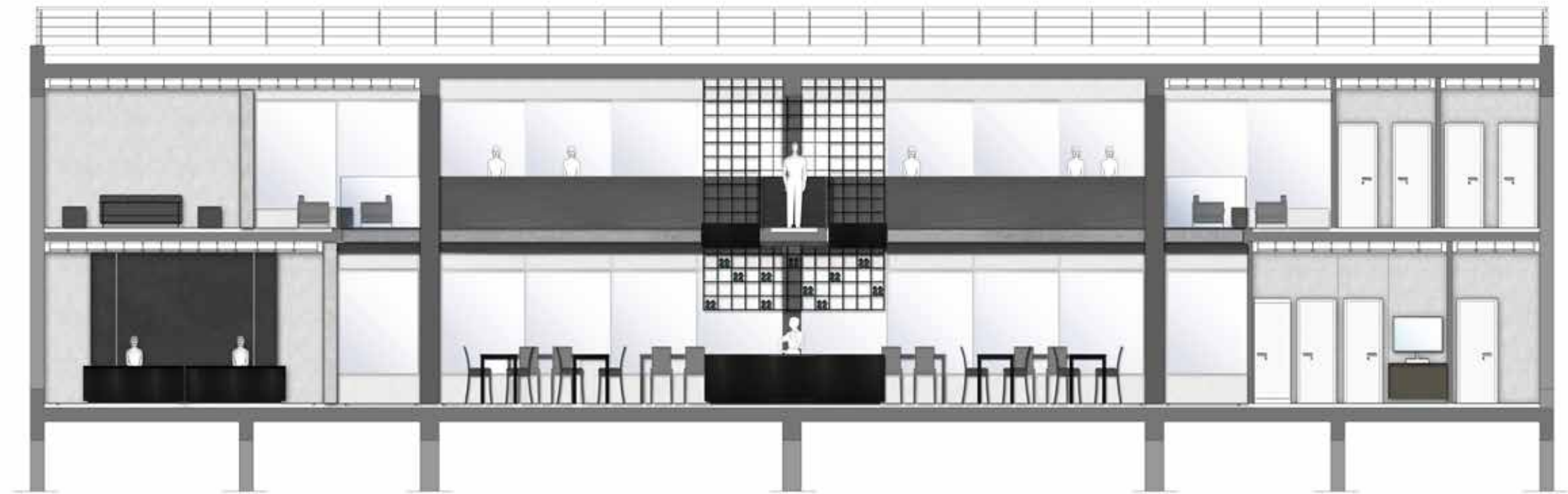
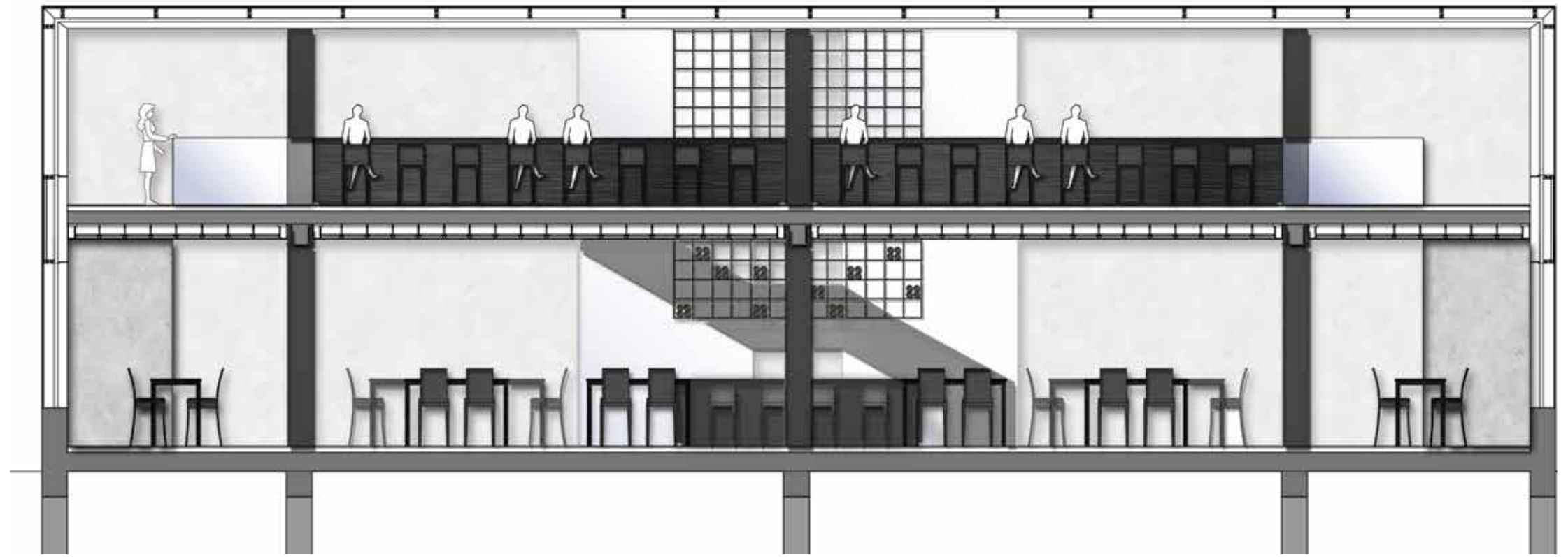
A double height metallic cage placed in the center contains the bar, which is the function that I wanted to highlight the most, along with the DJ set placed above it on the first floor.

The void, in the center of the place, enables clients to overhang the bar as well as a part of the restaurant.









## 6 BEAUTY CENTER

A beauty center being a quiet and a zen place, I wanted to create a peaceful atmosphere by playing with lights and shadows. I was mainly inspired by the moucharabieh that created a subtle contrast in the relaxation space as well as the massage rooms. I chose to elevate the patterned wall over a double height in order to install an ultimate serenity and comfort within the clients. The alternating spaced out masage rooms on the first floor, allowed the creation of a path that gradually changes the client's state of mind.





